

60

LAT-60

magiLOTUS

LAVELLI
SINK UNITS
SPÜLBECKEN
BAC-EVIERS
FREGADEROS

Descrizione

Costruzione - Modello realizzato in acciaio inox CrNi 18/10 AISI 304, con piano di spessore 1 mm, satinatura superficiale Scotch-Brite, particolari cromati, profili arrotondati. Piani dotati di alzatina posteriore.

Modello - Lavelli con rubinetto a leva conforme a norme igieniche, per uso professionale. Con 1 o 2 vasche, predisposti con sgocciolatoio.

Dotazioni - Piedini regolabili in altezza.



LAT-60

Description

Construction - Fabricated using CrNi 18/10 AISI 304 grade Stainless Steel Scotch-Brite Satin polish Finish, incorporating 1mm thick worktop, rounded edges, chromed details and rear splash back.

Model - Professional Sinks with Lever arm Tap for hygiene standards. Sinks with 1 or 2 bowls and suitable for dishwasher.

Fittings - Appliance is supplied with adjustable feet.

Bezeichnung

Aufbau - Modell aus Edelstahl CrNi 18/10 AISI 304 hergestellt, Deckplatte mit einer Stärke von 1 mm, Satinierung der Oberfläche Scotch-Brite, Einzelteile verchromt, abgerundete Profile. Einschübe ausgestattet mit hinterer Aufkantung.

Modell - Spülbecken mit Hebelventil entsprechend der Hygienebestimmungen, für den professionellen Gebrauch. Spülbecken mit 1 oder 2 Becken und Vorbereitung für Geschirrspülmaschine.

Ausstattungen - Höhenverstellbare Füße.

Description

Construction - Modèle réalisé en acier inox CrNi 18/10 AISI 304, avec plan de 1 mm d'épaisseur, satinage superficiel Scotch-Brite, détails chromés, profilés arrondis. Plans équipés de rehausseur postérieur.

Modèle - Bac-évier avec robinet à levier conforme aux normes d'hygiène, à usage professionnel. Bac-évier avec 1 ou 2 bacs et prédisposé pour lave-vaisselle.

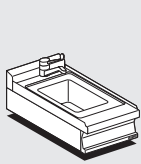
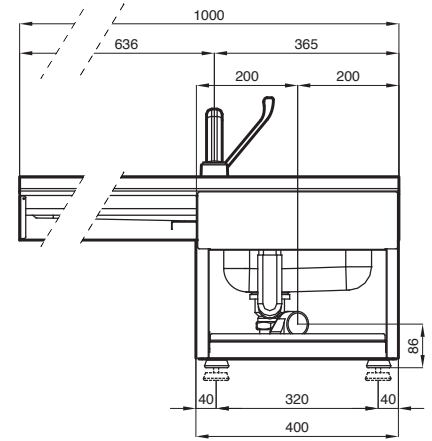
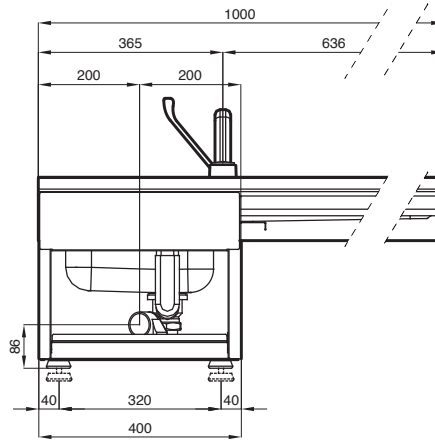
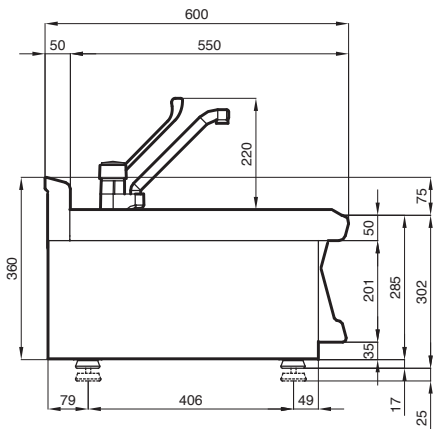
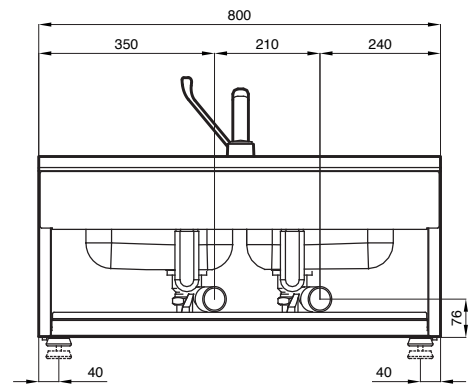
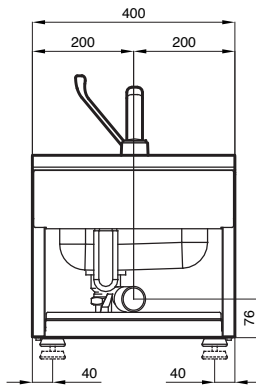
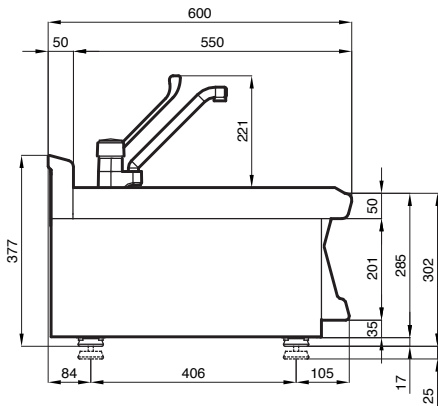
Équipements - Pieds réglables en hauteur.

Descripción

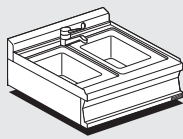
Construcción - Modelo realizado en acero inox CrNi 18/10 AISI 304, con plano de 1 mm de grosor, satinado superficial Scotch-Brite, detalles cromados y perfiles redondeados. Plano dotado de alzado posterior.

Modelo - Fregaderos con grifo con palanca, de conformidad con las normas higiénicas, para uso profesional. Fregaderos con 1 o 2 piletas y predisuestos.

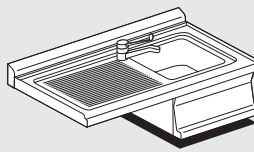
Dotaciones - Patas regulables en altura.



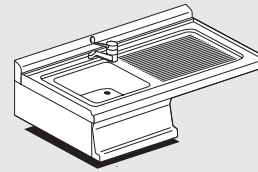
LAT-64



LAT-68



LAT-610DX



LAT-610SX

Modelli Models Modele Modeles Modelos	Dimensioni Dimensions Abmessungen Dimensions Dimensiones	Vasca Bowl Becken Bac Cuba	Sgocciolatoio Draining board Abtropffläche Egouttoir Escurridor	Peso/Volume Weight/Volume Gewicht/Volumen Poids/Volume Peso/Volumen
	cm	N° • cm	cm	kg/m³
LAT-64	40x60x28h	1 • 29x35x14h		20 / 0,180
LAT-68	80x60x28h	2 • 29x35x14h		32 / 0,330
LAT-610DX	100x60x28h	1 • 29x35x14h • DX	60 • SX	36 / 0,370
LAT-610SX	100x60x28h	1 • 29x35x14h • SX	60 • DX	36 / 0,370

DX - Destro / Right / Rechts / A droite / Derecho

SX - Sinistro / Left / Links / A gauche / Izquierda

BUY LOTUS
BUY ITALY

La ditta si riserva di apportare modifiche senza preavviso
The manufacturer reserves the right to modify the technical data and models without
previous notice - Technische Änderungen vorbehalten - La Société se réserve le droit
d'apporter tout modification sans préavis - La Empresa se reserva el derecho de
introducir, sin preaviso, modificaciones en cualquier momento



ITALIAN CULINARY ART

LOTUS SpA - Via Calmaor, 46
31020 Zoppé di S. Vendemiano (TV) - ITALY
Tel. +39 0438 778020 / 778468
Fax +39 0438 778277
www.lotuscookers.it - lotus@lotuscookers.it